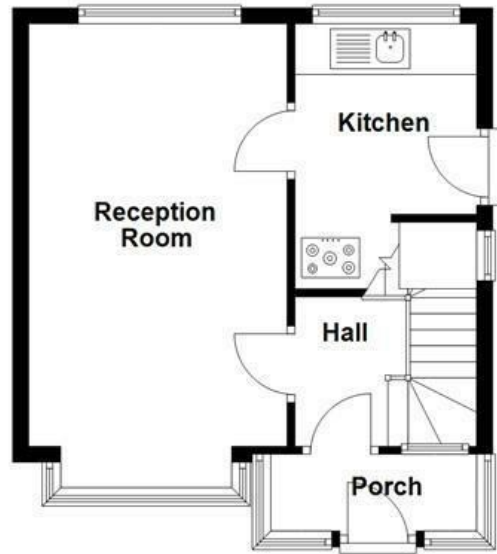
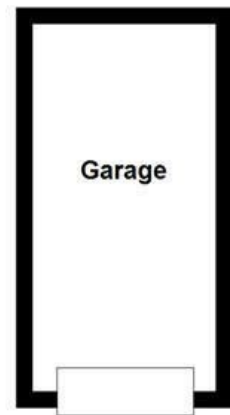
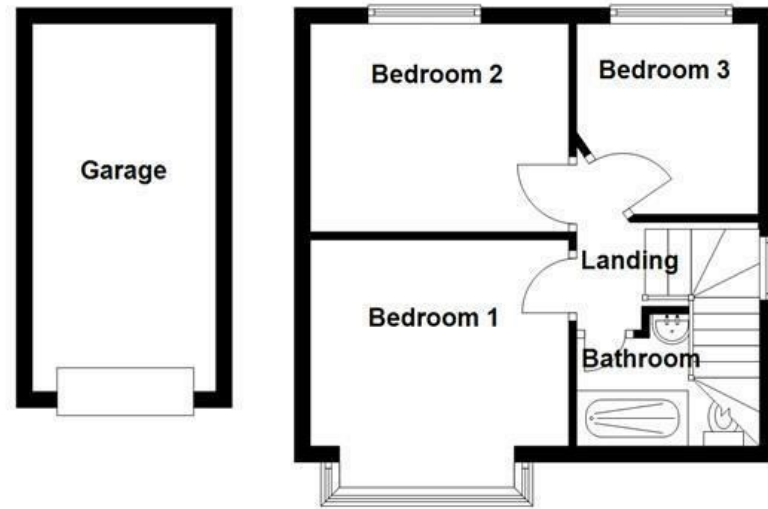


Ground Floor
Approx. 44.5 sq. metres (478.7 sq. feet)



First Floor
Approx. 30.7 sq. metres (330.7 sq. feet)



Energy Efficiency Rating		Current	Potential
Very energy efficient - lower running costs			
(92 plus) A			
(81-91) B			
(69-80) C			
(55-68) D			
(39-54) E			
(21-38) F			
(1-20) G			
Not energy efficient - higher running costs			
England & Wales	EU Directive 2002/91/EC		

These particulars, whilst believed to be accurate are set out as a general outline only for guidance and do not constitute any part of an offer or contract. Intending purchasers should not rely on them as statements of representation of fact, but must satisfy themselves by inspection or otherwise as to their accuracy. No person in this firm's employment has the authority to make or give any representation or warranty in respect of the property.

Rhiwlas Drive, Bury, BL9 9DE

Offers Over £199,950

STUNNING THREE BEDROOM, SEMI-DETACHED PROPERTY.

Nestled on the charming Rhiwlas Drive in Bury, this beautiful three-bedroom semi-detached house offers a perfect blend of comfort and practicality. Upon entering, you are welcomed by a spacious and inviting large reception room, ideal for both relaxation and entertaining guests. The cozy kitchen provides a warm atmosphere, perfect for family meals and culinary adventures.

The property boasts three well-proportioned bedrooms, ensuring ample space for family living or accommodating guests. The bathroom is conveniently located, catering to the needs of the household with ease.

One of the standout features of this home is the expansive garden, which presents a wonderful opportunity for outdoor enjoyment, gardening, or simply unwinding in a tranquil setting. Additionally, the property includes a driveway with a garage, providing secure parking and extra storage space.

This semi-detached house is not just a home; it is a lifestyle choice, offering a peaceful retreat while being conveniently located near local amenities. Whether you are a growing family or looking for a comfortable space to call your own, this property on Rhiwlas Drive is sure to impress.

For more information or to book a viewing, please contact our Bury branch as soon as possible.

Rhiwlas Drive, Bury, BL9 9DE

Offers Over £199,950



- Semi Detached Property
- Spacious Reception Room
- Off Road Parking & Garage
- EPC Rating TBC
- Three Bedrooms
- Modern Shower Room
- Leasehold
- Fitted Kitchen
- Front & Rear Gardens
- Council Tax Band B

Ground Floor

Porch

8'6 x 3'2 (2.59m x 0.97m)

Hallway

7'6 x 6'2 (2.29m x 1.88m)

Reception Room

17'5 x 10'8 (5.31m x 3.25m)

Kitchen

10'6 x 8 (3.20m x 2.44m)

First Floor

Landing

7'7 x 6'1 (2.31m x 1.85m)

Bedroom One

11 x 10'7 (3.35m x 3.23m)

Bedroom Two

10'7 x 8'7 (3.23m x 2.62m)

Bedroom Three

7'8 x 7'5 (2.34m x 2.26m)

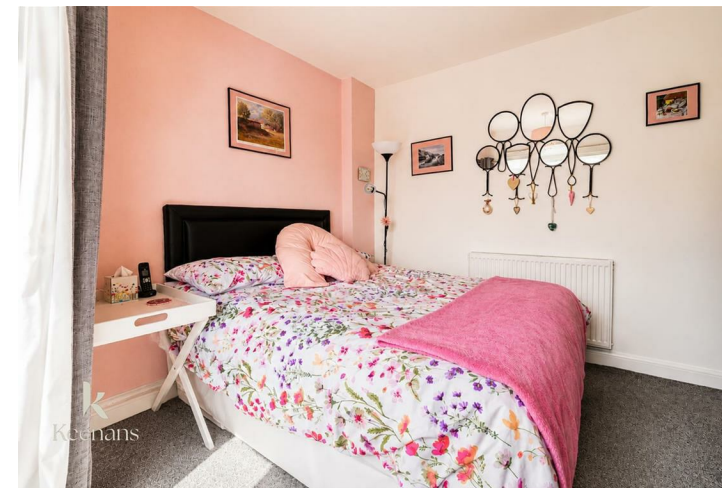
Bathroom

7'6 x 6'2 (2.29m x 1.88m)

Exterior

Garage

15'2 x 7'7 (4.62m x 2.31m)



Tel: 01617510340

www.keenans-estateagents.co.uk